

**ALCHIMICA INDIA PVT.LIMITED**

21, Thiru Nagar, Vadapalani,  
Chennai - 600 026, Tamil nadu, India.  
Hand ph: +91-7358376908  
Email Id: mr@alchimica.co.in



**DATE: 17.2.16**

<b>SITE NAME</b>	<b>:</b>	<b>SAP LABS, WHITE FIELD, BANGLORE.</b>
<b>APPLICATOR</b>	<b>:</b>	<b>MP INTEGRATED ROOFING PVT LTD</b>
<b>CLIENT NAME</b>	<b>:</b>	<b>SAP LABS</b>
<b>PROJECT DETAILS</b>	<b>:</b>	<b>a) TERRACE WATERPROOFING OF 830 SQM (APPROX)- HYPERDESMO CLASSIC APPLICATION.</b> <b>b) TRANSPARENT WATER PROOFING OF 170 SQM (APPROX)- HYPERDESMOT AND HYPERDESMO ADYE APPLICATION</b>

**1) BIG BITUMEN FELT AREA**

**TREATMENT DETAILS:**

**A) MATERIAL USED:**

- MICROSEALER 50 FOR PRIMER APPLICATION WITH THE COVERAGE OF 150 GM/SQM
- HYPER SEAL 25 LMS IS USED FOR WALL AND FLOOR JOINTS, CRACKS AND ALSO IN CONSTRUCTION JOINTS
- HYPERDESMO CLASSIC FOR TOP COAT WITH THE COVERAGE OF 2KG/SQM IN TWO COATS.

**B) APPROX AREA:**

- 293 SQ M.

**C) CONSTRUCTION JOINT DETAILS:**

- **CONSTRUCTION JOINTS ARE CHIPPED IN 'V' GROOVE AND APPLIED PRIMER IN THE GROOVE AFTER IT GETS CURED. WE APPLIED THE HYPERSEAL 25 LMS BY USING SEALANT GUN.**

**D) MONTH AND YEAR OF COMPLETION:**

- **DEC 2015**

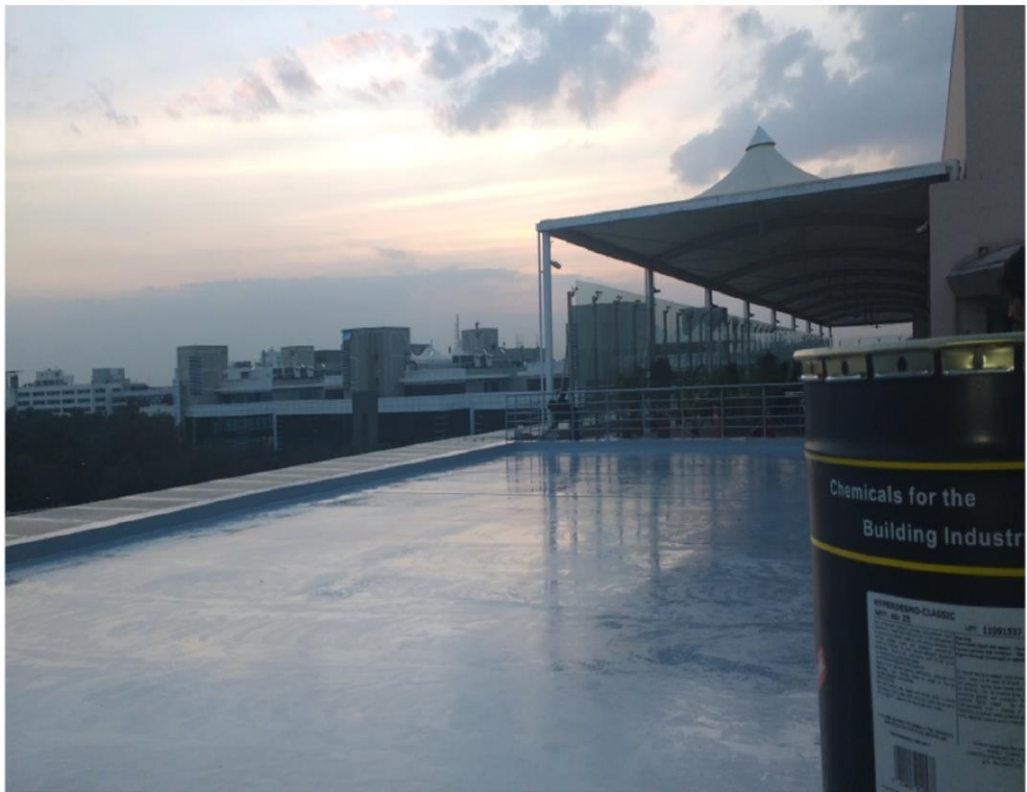












## **2) SMALL BITUMEN FELT AREA**

### **TREATMENT DETAILS:**

#### **A) MATERIAL USED:**

- MICROSEALER 50 FOR PRIMER APPLICATION WITH THE COVERAGE OF 150 GM/SQM
- HYPER SEAL 25 LMS IS USED FOR WALL AND FLOOR JOINTS, CRACKS AND ALSO IN CONSTRUCTION JOINTS
- HYPERDESMO CLASSIC FOR TOP COAT WITH THE COVERAGE OF 2KG/SQM IN TWO COATS.

#### **E) APPROX AREA:**

- 75 SQ M.

#### **F) CONSTRUCTION JOINT DETAILS:**

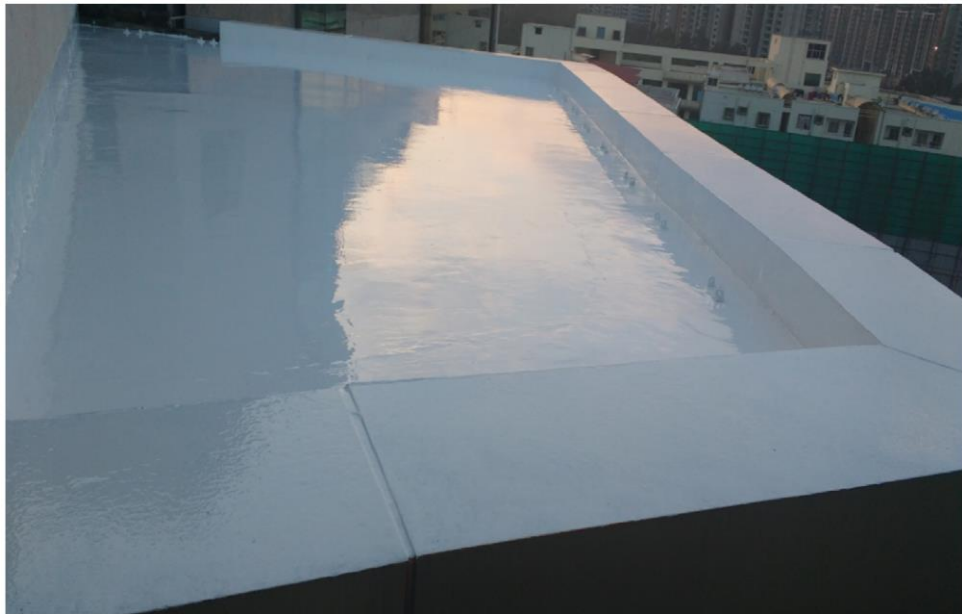
- CONSTRUCTION JOINTS ARE CHIPPED IN 'V' GROOVE AND APPLIED PRIMER IN THE GROOVE AFTER IT GETS CURED. WE APPLIED THE HYPERSEAL 25 LMS BY USING SEALANT GUN.

#### **G) MONTH AND YEAR OF COMPLETION:**

- DEC 2015









### **3) 6<sup>TH</sup> FLOOR OPEN GRANITE AREA**

#### **TREATMENT DETAILS:**

##### **A) MATERIAL USED:**

- **AQUA SMART DUR FOR PRIMER APPLICATION WITH THE COVERAGE OF 150 GM/SQM**
- **USED QUARTZ SAND AND AQUA SMART DUR PRIMER FOR THE GAP FILLING OF THE GRANITE JOINTS.**
- **HYPER DESMO T FOR THE JOINTS OF GRANITE WITH THE COVERAGE OF 300 GM/ SQM**
- **HYPERDESMO ADYE FOR THE OVERALL COATING IN THE GRANITE AREA WITH THE CONSUMPTION OF 200 G/SQM**

##### **B) APPROX AREA:**

- **130 SQ M.**

##### **C) MONTH AND YEAR OF COMPLETION:**

- **DEC 2015**







#### **4) ARCH AREA**

##### **TREATMENT DETAILS:**

##### **A) MATERIAL USED:**

- MICROSEALER 50 FOR PRIMER APPLICATION WITH THE COVERAGE OF 150 GM/SQM
- HYPER SEAL 25 LMS IS USED FOR WALL AND FLOOR JOINTS, CRACKS AND ALSO IN CONSTRUCTION JOINTS
- HYPERDESMO CLASSIC FOR TOP COAT WITH THE COVERAGE OF 2KG/SQM IN TWO COATS.

##### **H) APPROX AREA:**

- 280 SQ M.

##### **I) CONSTRUCTION JOINT DETAILS:**

- CONSTRUCTION JOINTS ARE CHIPPED IN 'V' GROOVE AND APPLIED PRIMER IN THE GROOVE AFTER IT GETS CURED. WE APPLIED THE HYPERSEAL 25 LMS BY USING SEALANT GUN.

##### **J) MONTH AND YEAR OF COMPLETION:**

- DEC 2015













## **5) ARCH GRANITE AREA**

### **TREATMENT DETAILS:**

#### **A) MATERIAL USED:**

- **AQUA SMART DUR FOR PRIMER APPLICATION WITH THE COVERAGE OF 150 GM/SQM**
- **USED QUARTZ SAND AND AQUA SMART DUR PRIMER FOR THE GAP FILLING OF THE GRANITE JOINTS.**
- **HYPER DESMO T FOR THE JOINTS OF GRANITE WITH THE COVERAGE OF 300 GM/ SQM**
- **HYPERDESMO ADYE FOR THE OVERALL COATING IN THE GRANITE AREA WITH THE CONSUMPTION OF 200 G/SQM**

#### **B) APPROX AREA:**

- **131 SQ M.**

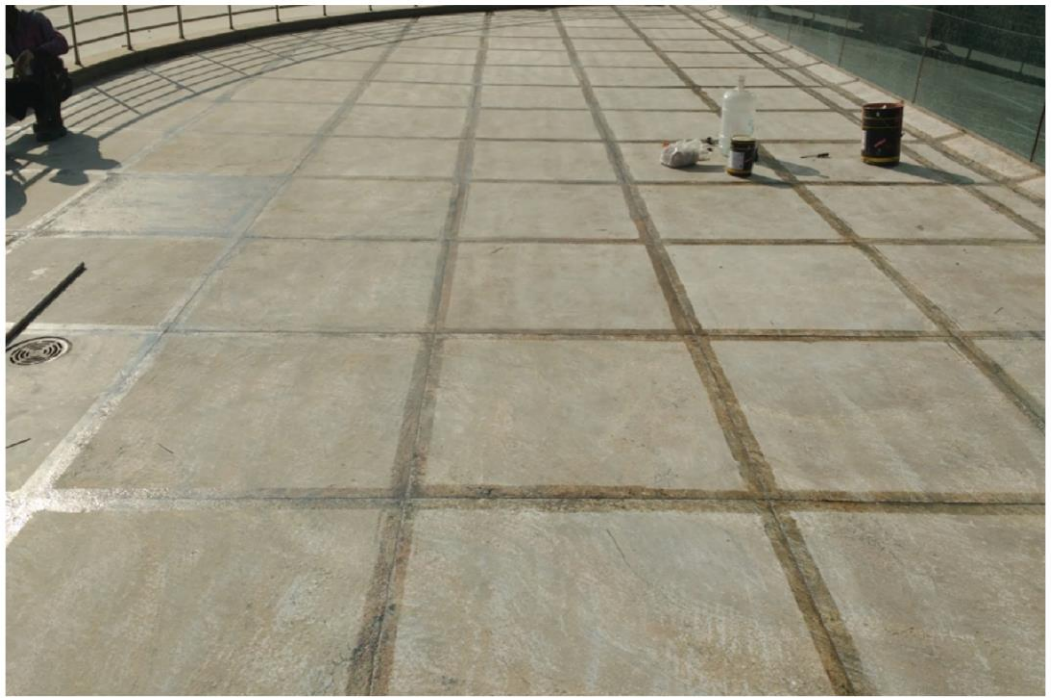
#### **C) MONTH AND YEAR OF COMPLETION:**

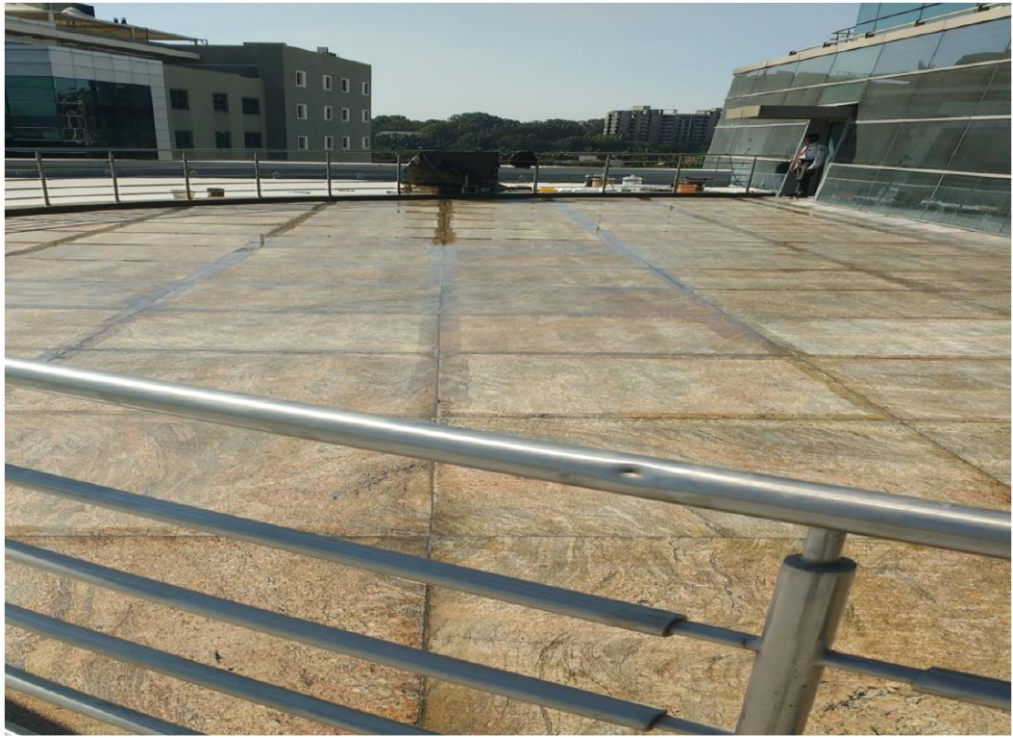
- **DEC 2015**













#### **D) CANTEEN SIDE AREA**

##### **TREATMENT DETAILS:**

##### **A) MATERIAL USED:**

- MICROSEALER 50 FOR PRIMER APPLICATION WITH THE COVERAGE OF 150 GM/SQM
- HYPER SEAL 25 LMS IS USED FOR WALL AND FLOOR JOINTS, CRACKS AND ALSO IN CONSTRUCTION JOINTS
- HYPERDESMO CLASSIC FOR TOP COAT WITH THE COVERAGE OF 2KG/SQM IN TWO COATS.

##### **B) APPROX AREA:**

- 186 SQ M.

##### **C) CONSTRUCTION JOINT DETAILS:**

- CONSTRUCTION JOINTS ARE CHIPPED IN 'V' GROOVE AND APPLIED PRIMER IN THE GROOVE AFTER IT GETS CURED. WE APPLIED THE HYPERSEAL 25 LMS BY USING SEALANT GUN.

##### **D) MONTH AND YEAR OF COMPLETION:**

- DEC 2015









**PREPARED BY,**  
**MOHAMED RAFI. I,**  
**ALCHIMICA,**  
**INDIA.**